

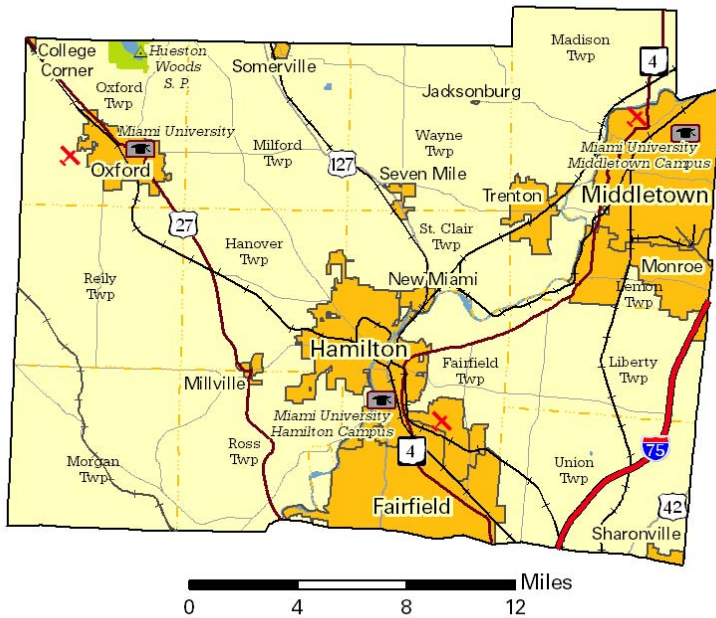
# Ohio County Profiles



Prepared by the Office of Research

## Butler County

**Established:** Act - May 1, 1803  
**2014 Population:** 374,158  
**Land Area:** 467.3 square miles  
**County Seat:** Hamilton City  
**Named for:** General Richard Butler, Revolutionary War



### Taxes

Taxable value of real property	\$6,998,258,090
Residential	\$5,292,509,310
Agriculture	\$175,881,570
Industrial	\$500,648,900
Commercial	\$1,029,218,310
Mineral	\$0
Ohio income tax liability	\$274,517,206
Average per return	\$1,697.54

### Land Use/Land Cover

Land Use/Land Cover	Percent
Urban (Residential/Commercial/Industrial/Transportation and Urban Grasses)	12.77%
Cropland	51.45%
Pasture	11.30%
Forest	23.24%
Open Water	0.88%
Wetlands (Wooded/Herbaceous)	0.00%
Bare/Mines	0.36%

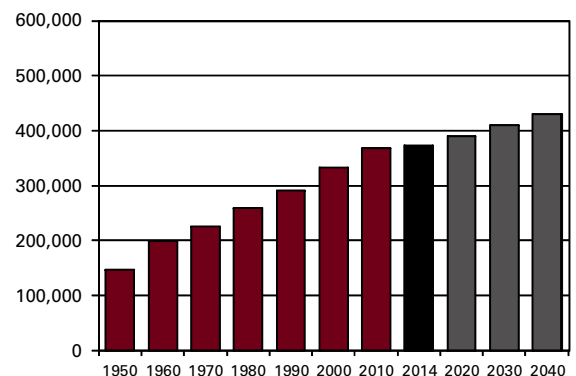
### Largest Places

	Est. 2014	Census 2010
Hamilton city	62,486	62,272
West Chester twp UB	60,037	58,595
Middletown city (pt.)	46,088	45,994
Fairfield city (pt.)	42,770	42,503
Liberty twp UB	37,384	36,494
Fairfield twp	22,045	21,526
Oxford city	21,782	21,376
Monroe city (pt.)	13,137	12,322
Trenton city	12,260	11,869
Madison twp	8,598	8,448

UB: Unincorporated balance.

### Total Population

Census		Estimated	
1800		1910	70,271
1810	11,150	1920	87,025
1820	21,746	1930	114,084
1830	27,142	1940	120,249
1840	28,173	1950	147,203
1850	30,789	1960	199,076
1860	35,840	1970	226,207
1870	39,912	1980	258,787
1880	42,579	1990	291,479
1890	48,597	2000	332,807
1900	56,870	2010	368,130
		2011	370,210
		2012	370,833
		2013	371,511
		2014	374,158
		Projected	
		2020	390,110
		2030	410,960
		2040	430,360



Population by Race	Number	Percent
ACS Total Population	369,650	100.0%
White	320,355	86.7%
African-American	27,534	7.4%
Native American	482	0.1%
Asian	9,519	2.6%
Pacific Islander	112	0.0%
Other	4,086	1.1%
Two or More Races	7,562	2.0%
Hispanic (may be of any race)	15,046	4.1%
<b>Total Minority</b>	<b>59,906</b>	<b>16.2%</b>

Educational Attainment	Number	Percent
Persons 25 years and over	234,840	100.0%
No high school diploma	25,980	11.1%
High school graduate	80,207	34.2%
Some college, no degree	47,139	20.1%
Associate degree	17,130	7.3%
Bachelor's degree	41,484	17.7%
Master's degree or higher	22,900	9.8%

Family Type by Employment Status	Number	Percent
Total Families	94,581	100.0%
Married couple, husband and wife in labor force	40,934	43.3%
Married couple, husband in labor force, wife not	14,609	15.4%
Married couple, wife in labor force, husband not	4,932	5.2%
Married couple, husband and wife not in labor force	11,440	12.1%
Male householder, in labor force	4,626	4.9%
Male householder, not in labor force	1,354	1.4%
Female householder, in labor force	12,465	13.2%
Female householder, not in labor force	4,183	4.4%

Household Income	Number	Percent
Total Households	134,612	100.0%
Less than \$10,000	8,710	6.5%
\$10,000 to \$19,999	12,550	9.3%
\$20,000 to \$29,999	13,424	10.0%
\$30,000 to \$39,999	12,683	9.4%
\$40,000 to \$49,999	12,462	9.3%
\$50,000 to \$59,999	10,635	7.9%
\$60,000 to \$74,999	14,963	11.1%
\$75,000 to \$99,999	17,714	13.2%
\$100,000 to \$149,999	19,172	14.2%
\$150,000 to \$199,999	7,810	5.8%
\$200,000 or more	4,489	3.3%
<b>Median household income</b>	<b>\$56,610</b>	

Population by Age	Number	Percent
ACS Total Population	369,650	100.0%
Under 5 years	24,332	6.6%
5 to 17 years	67,464	18.3%
18 to 24 years	43,014	11.6%
25 to 44 years	92,505	25.0%
45 to 64 years	97,977	26.5%
65 years and more	44,358	12.0%
<b>Median Age</b>	<b>36.2</b>	

Family Type by Presence of Own Children Under 18	Number	Percent
Total Families	94,581	100.0%
Married-couple families with own children	29,236	30.9%
Male householder, no wife present, with own children	2,988	3.2%
Female householder, no husband present, with own children	10,418	11.0%
Families with no own children	51,939	54.9%

Poverty Status of Families By Family Type by Presence Of Related Children	Number	Percent
Total Families	94,581	100.0%
Family income above poverty level	85,495	90.4%
Family income below poverty level	9,086	9.6%
Married couple, with related children	1,902	20.9%
Male householder, no wife present, with related children	708	7.8%
Female householder, no husband present, with related children	4,557	50.2%
Families with no related children	1,919	21.1%

Ratio of Income To Poverty Level	Number	Percent
Population for whom poverty status is determined	357,457	100.0%
Below 50% of poverty level	24,064	6.7%
50% to 99% of poverty level	24,614	6.9%
100% to 124% of poverty level	15,006	4.2%
125% to 149% of poverty level	13,574	3.8%
150% to 184% of poverty level	21,199	5.9%
185% to 199% of poverty level	7,612	2.1%
200% of poverty level or more	251,388	70.3%

Geographical Mobility	Number	Percent
Population aged 1 year and older	364,666	100.0%
Same house as previous year	308,583	84.6%
Different house, same county	34,172	9.4%
Different county, same state	14,565	4.0%
Different state	6,548	1.8%
Abroad	798	0.2%

Percentages may not sum to 100% due to rounding.

## Travel Time To Work

	Number	Percent
Workers 16 years and over	164,755	100.0%
Less than 15 minutes	46,552	28.3%
15 to 29 minutes	62,227	37.8%
30 to 44 minutes	36,711	22.3%
45 to 59 minutes	12,683	7.7%
60 minutes or more	6,582	4.0%

Mean travel time **23.5 minutes**

## Housing Units

	Number	Percent
Total housing units	148,303	100.0%
Occupied housing units	134,612	90.8%
Owner occupied	94,831	70.4%
Renter occupied	39,781	29.6%
Vacant housing units	13,691	9.2%

## Year Structure Built

	Number	Percent
Total housing units	148,303	100.0%
Built 2010 or later	389	0.3%
Built 2000 to 2009	20,732	14.0%
Built 1990 to 1999	24,409	16.5%
Built 1980 to 1989	18,552	12.5%
Built 1970 to 1979	24,825	16.7%
Built 1960 to 1969	14,011	9.4%
Built 1950 to 1959	18,664	12.6%
Built 1940 to 1949	7,154	4.8%
Built 1939 or earlier	19,567	13.2%

Median year built **1976**

## Value for Specified Owner-Occupied Housing Units

	Number	Percent
Specified owner-occupied housing units	94,831	100.0%
Less than \$20,000	2,820	3.0%
\$20,000 to \$39,999	1,438	1.5%
\$40,000 to \$59,999	3,462	3.7%
\$60,000 to \$79,999	6,259	6.6%
\$80,000 to \$99,999	8,646	9.1%
\$100,000 to \$124,999	10,611	11.2%
\$125,000 to \$149,999	10,566	11.1%
\$150,000 to \$199,999	21,739	22.9%
\$200,000 to \$299,999	19,961	21.0%
\$300,000 to \$499,999	7,700	8.1%
\$500,000 to \$999,999	1,267	1.3%
\$1,000,000 or more	362	0.4%

Median value **\$157,400**

## House Heating Fuel

	Number	Percent
Occupied housing units	134,612	100.0%
Utility gas	76,098	56.5%
Bottled, tank or LP gas	4,181	3.1%
Electricity	44,007	32.7%
Fuel oil, kerosene, etc	7,389	5.5%
Coal, coke or wood	1,531	1.1%
Solar energy or other fuel	990	0.7%
No fuel used	416	0.3%

Percentages may not sum to 100% due to rounding.

## Gross Rent

	Number	Percent
Specified renter-occupied housing units	39,781	100.0%
Less than \$100	153	0.4%
\$100 to \$199	424	1.1%
\$200 to \$299	948	2.4%
\$300 to \$399	850	2.1%
\$400 to \$499	1,841	4.6%
\$500 to \$599	3,945	9.9%
\$600 to \$699	5,260	13.2%
\$700 to \$799	5,528	13.9%
\$800 to \$899	5,234	13.2%
\$900 to \$999	4,004	10.1%
\$1,000 to \$1,499	7,617	19.1%
\$1,500 or more	1,930	4.9%
No cash rent	2,047	5.1%

Median gross rent **\$798**

Median gross rent as a percentage of household income **31.5**

## Selected Monthly Owner Costs for Specified Owner-Occupied Housing Units

	Number	Percent
Specified owner-occupied housing units with a mortgage	69,821	100.0%
Less than \$400	293	0.4%
\$400 to \$599	1,805	2.6%
\$600 to \$799	5,211	7.5%
\$800 to \$999	7,738	11.1%
\$1,000 to \$1,249	11,822	16.9%
\$1,250 to \$1,499	11,378	16.3%
\$1,500 to \$1,999	17,098	24.5%
\$2,000 to \$2,999	12,100	17.3%
\$3,000 or more	2,376	3.4%

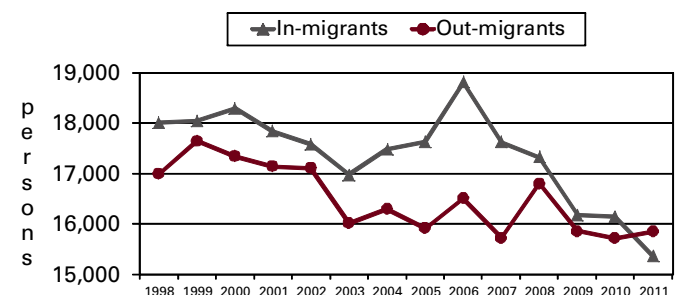
Median monthly owners cost **\$1,427**

Median monthly owners cost as a percentage of household income **22.3**

## Vital Statistics

	Number	Rate
Births / rate per 1,000 women aged 15 to 44	4,636	61.1
Teen births / rate per 1,000 females 15-19	341	23.6
Deaths / rate per 100,000 population	2,882	776.9
Marriages / rate per 1,000 population	1,935	5.3
Divorces / rate per 1,000 population	1,291	3.6

## Migration



## Agriculture

Land in farms (acres)	146,054
Number of farms	865
Average size (acres)	169
Total cash receipts	\$65,040,000
Per farm	\$75,190
Receipts for crops	\$52,310,000
Receipts for livestock/products	\$12,730,000

## Education

Public schools buildings	85
Students (Average Daily Membership)	58,965
Teachers (Full Time Equivalent)	3,188.1
Expenditures per student	\$8,520
Graduation rate	89.3
Non-public schools	14
Students	3,402
4-year public universities	1
Branches	2
2-year public colleges/satellites	0
Private universities and colleges	0
Public libraries (Main / Branches)	2 / 5

## Transportation

Registered motor vehicles	366,891
Passenger cars	263,703
Noncommercial trucks	46,522
Total license revenue	\$9,078,124.21
Interstate highway miles	11.25
Turnpike miles	0.00
U.S. highway miles	46.45
State highway miles	178.54
County, township, and municipal road miles	1,773.26
Commercial airports	3

## Health Care

Physicians (MDs & DOs)	496
Registered hospitals	7
Number of beds	763
Licensed nursing homes	22
Number of beds	2,194
Licensed residential care	21
Number of beds	1,685
Persons with health insurance (Aged 0 to 64)	87.7%
Adults with insurance (Aged 18 to 64)	84.8%
Children with insurance (Aged Under 19)	94.7%

## Voting

Number of registered voters	236,261
Voted in 2014 election	88,508
Percent turnout	37.5%

## Communications

Television stations	0
Radio stations	4
Daily newspapers	1
Circulation	14,632
Weekly newspapers	2
Circulation	49,139

## Crime

Total crimes reported in Uniform Crime Report	16,179
Violent crime	1,374
Property crime	14,712
Arson	93

## Finance

FDIC insured financial institutions (HQs)	3
Assets (000)	\$6,742,413
Branch offices	103
Institutions represented	20

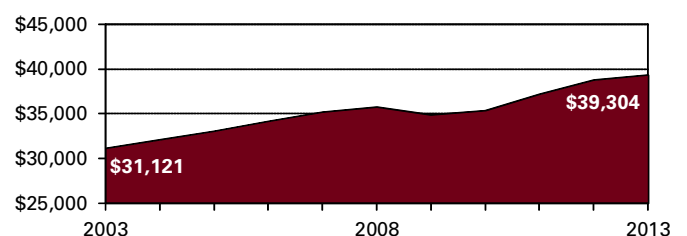
## Transfer Payments

Total transfer payments	\$2,644,976,000
Payments to individuals	\$2,568,840,000
Retirement and disability	\$1,007,762,000
Medical payments	\$1,115,641,000
Income maintenance (Supplemental SSI, family assistance, food stamps, etc)	\$272,904,000
Unemployment benefits	\$54,173,000
Veterans benefits	\$61,533,000
Federal education and training assistance	\$54,156,000
Other payments to individuals	\$2,671,000
Total personal income	\$14,592,549,000
Dependency ratio	18.1%
(Percent of income from transfer payments)	

## State Parks, Forests, Nature Preserves, And Wildlife Areas

Areas/Facilities	2
Acreage	1,182.88

## Per Capita Personal Income



**Civilian Labor Force**

	2010	2011	2012	2013	2014
Civilian labor force	190,700	188,900	186,400	186,600	186,800
Employed	171,600	171,700	172,200	172,700	176,700
Unemployed	19,100	17,100	14,200	13,900	10,000
Unemployment rate	10.0	9.1	7.6	7.4	5.4

**Establishments, Employment, and Wages by Sector: 2013**

Industrial Sector	Number of Establishments	Average Employment	Total Wages	Average Weekly Wage
Private Sector	7,192	122,161	\$5,153,542,303	\$811
Goods-Producing	1,076	24,763	\$1,520,735,085	\$1,181
Natural Resources and Mining	22	158	\$6,947,434	\$848
Constuction	610	5,704	\$305,193,259	\$1,029
Manufacturing	444	18,901	\$1,208,594,392	\$1,230
Service-Providing	6,117	97,398	\$3,632,807,218	\$717
Trade, Transportation and Utilities	1,861	36,721	\$1,480,540,564	\$775
Information	80	857	\$42,033,579	\$943
Financial Services	718	8,685	\$564,450,708	\$1,250
Professional and Business Services	1,172	13,763	\$522,759,757	\$730
Education and Health Services	826	18,029	\$705,575,814	\$753
Leisure and Hospitality	755	15,571	\$211,345,033	\$261
Other Services	685	3,735	\$104,838,004	\$540
Federal Government		568	\$34,719,589	\$1,175
State Government		* * * * *	Data Not Available	* * * * *
Local Government		* * * * *	Data Not Available	* * * * *

Private Sector total includes Unclassified establishments not shown.

**Change Since 2008**

Private Sector	0.8%	-3.7%	3.6%	7.6%
Goods-Producing	-17.2%	-15.6%	-5.2%	12.3%
Natural Resources and Mining	10.0%	-35.2%	-33.0%	3.5%
Construction	-23.0%	-33.6%	-24.5%	13.7%
Manufacturing	-8.8%	-7.8%	1.6%	10.2%
Service-Producing	4.8%	-0.1%	7.7%	7.8%
Trade, Transportation and Utilities	-0.5%	-0.3%	6.7%	7.0%
Information	-5.9%	-12.6%	-9.3%	3.7%
Financial Services	0.7%	-16.1%	-1.3%	17.7%
Professional and Business Services	3.5%	0.4%	15.9%	15.3%
Education and Health Services	13.6%	-1.3%	10.3%	11.9%
Leisure and Hospitality	11.4%	13.7%	19.4%	4.8%
Other Services	11.7%	2.9%	6.8%	3.8%
Federal Government		-3.9%	9.5%	13.9%
State Government		* * * * *	Data Not Available	* * * * *
Local Government		* * * * *	Data Not Available	* * * * *

**Business Numbers**

	2010	2011	2012	2013	2014
Business starts	595	598	698	586	540
Active businesses	5,637	5,619	5,602	5,533	5,503

**Major Employers**

AK Steel Holding Corp	Mfg
Cincinnati Financial Corp	Ins
Cornerstone Brands Inc	Trade
Ft Hamilton Memorial Hospital	Serv
GE Aviation	Mfg
Lakota Local Schools	Govt
Liberty Mutual/Ohio Casualty Corp	Ins
Mercy Regional Hospital	Serv
Miami University	Govt
Middletown Regional Health System	Serv
Miller Coors	Mfg
Pierre Foods	Mfg

**Residential**

**Construction**

	2010	2011	2012	2013	2014
Total units	462	401	496	655	866
Total valuation (000)	\$88,135	\$77,777	\$89,939	\$132,998	\$156,704
Total single-unit bldgs	440	393	488	611	583
Average cost per unit	\$193,830	\$196,160	\$182,637	\$208,913	\$224,705
Total multi-unit bldg units	22	8	8	44	283
Average cost per unit	\$129,525	\$85,845	\$101,538	\$121,651	\$90,817