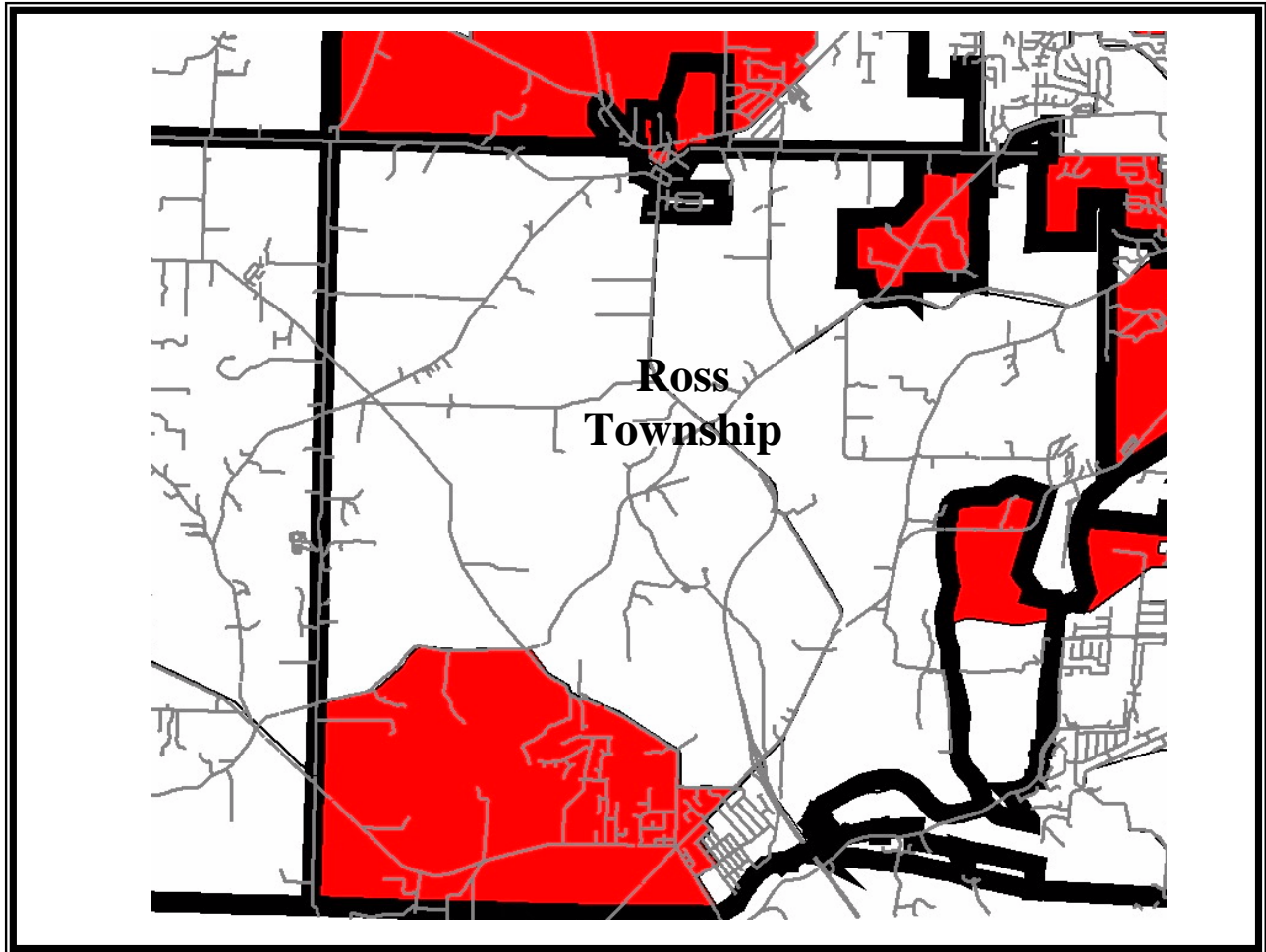


Ross Township
Butler County, Ohio
LMI Area



LMI AREA

*Area has 50.8% of population (or greater) which qualifies as Low or Moderate Income- based on 2000 U.S. Census. Other areas may qualify by performing local income surveys.

Butler County Department of Development
Community Development Division
130 High Street Hamilton, Ohio 45011
P: (513) 785-5391 F: (513) 785-5723

